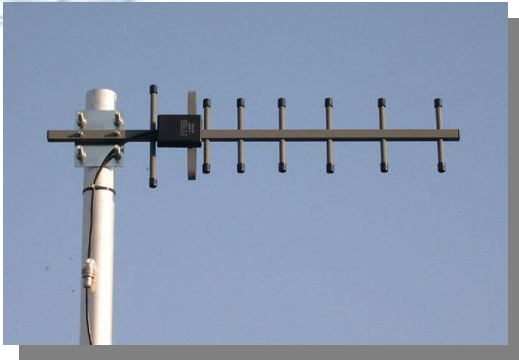


Cellular Band Yagi Antenna

RAY900/12



8 Element Yagi Antenna for cellular band voice and GPRS applications.

RAY900/15



13 Element Yagi Antenna for cellular band voice and GPRS applications.

Technical Data

	RAY900/12	RAY900/15
Frequency Range	870-960MHz	870-960MHz
Gain	11-12dBi	14-15dBi
Impedance	50 Ohm Nominal	50 Ohm Nominal
V.S.W.R.	<2.5:1	< 2.5:1
Horizontal beamwidth	Approx. 36 deg.	Approx. 32 deg.
Vertical beamwidth	Approx. 34 deg. .	Approx. 30 deg.
Power Input	50W	50W
Length	0.67 Meter	1.14 Meter
Input Connector	N female on 300mm pigtail	N female on 300mm pigtail
Weight:	0.65Kg	0.85Kg
Wind Velocity	160Km/H	160Km/h
Finish	Harsh environment resistant, 2 part epoxy spray paint. Colour grey.	